



HCW



HCW-Product list

English

List

- Pregnancy, children, women, men, middle-aged, and elderly testing and care.

NMNC Cell Life Cell protection

Blood Savior Hematopoiesis

Super Child Brain. Eyes. Teeth protection

Immune Star Strengthen immunity

Liver Energy Protect liver

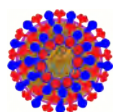
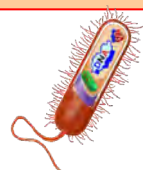
Eye Care Protect eyes

Protector Life Cardiovascular care

Power Life Heart protection

Young Energy Improve menopause

Ladies Energy Female care



Protector Energy

Super Life

Purine Clear

SOD Ester-C

Thrombus Buster

Muscle Booster

Bloodsugar Clear

Super Brain

Mouth Care

Dr. GI ands

Prostate protection

Male strong

Prevention uric acid

Anti-oxidation

Anti-thrombotic

Skeletal & Muscles

Prevent diabetes

Prevent dementia

Gastrointestinal protection

Endocrine gland protection



Healthy Lungs

Oxygen supply to protect cells

Hydrogen Water System

Active Hydrogen Water

Anti Aging Essence

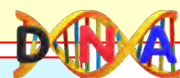
Skin care

Anti Aging Pack

Whitening, moisturizing and anti-spot

Liver Metabolism Gene Test

Free radical Test





Functional food functional raw materials and names:
Probiotics LAB: Improve bowel movements
Green Tea Catechin EGCG: Diet
Aojiru: Lowers LDL (bad cholesterol)

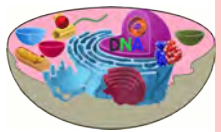


+226

Package

2g × 30 bags/box, fine particle powder/easy-tear aluminum foil.

Feature



- New "Cellular Regulatory Nutrients", 「kunShinSaShi」formula, Plant Enzyme + Coenzyme.
- Plant fermentation enzymes, Nutrients, Vitamins, Trace Minerals, Phytochemicals, Antioxidants.
- Anti-ROS oxidation, cell protection, anti-aging, skin care, longevity gene activation, anti-cancer.
- Immunity UP, antiviral bacteria, antiallergic, anti (blood pressure, blood sugar, blood lipid, uric acid).
- Promotion of metabolism, detox, improvement of constipation, diet, prevention of lifestyle-related diseases.

Ingredient

Natto Bacteria Fermented SOD, Melon placenta SOD, Green tea Matcha catechin EGCG, Seaweed Fucoidan, Composite enzyme, Aojiru Dietary fiber, Probiotic Lactobacillus, Green Coffee Bean Chlorogenic Acid, Rose Eugeniin, Grape Resveratrol, Coenzyme NMN, Ionic Active hydrogen, Lemon C.

Usage

1 bag a day, after eating.

SODLike NAM Composite enzyme

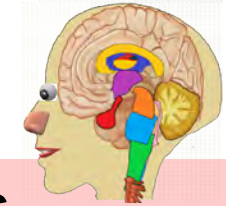
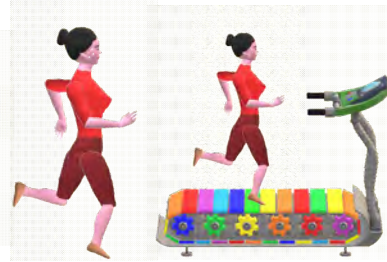
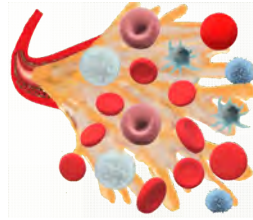


SOD





Anemia prevention, pregnancy preparation, pregnancy, lactation nutrition



DHA



60 capsules/aluminum foil bag, 1 capsule weighs 540mg (inner volume 340mg)/soft capsule.

- SOD-like can scavenge free radicals and reduce oxidative stress damage.
- DHA helps the normal development of fetal brain nerve cells.
- Lecithin and phospholipid serine provide nutrition for brain cells.
- Iron, folic acid, hematopoietic nutrients, prevent anemia.
- Insufficient folic acid can easily cause miscarriage and fetal hypoplasia.

Bacillus natto fermented SOD, omega fatty acids (DHA/EPA), soybean lecithin, phosphatidylserine (PS), yeast folic acid, ferrous iron, β -carotene.

1-3 capsules/day, take after meal.

PS

Lecithin

β -Carotene

Fe^{2+}

Folic acid





Unique production technology: suitable for children's taste



Package

430mg (300mg content) gummy capsule / orange flavor, 60 capsules / bottle / box

Feature

Supplements for children

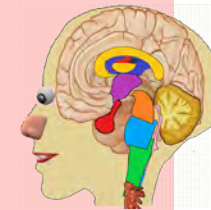
Three effects in one "protection of brain, eyesight, teeth" One grain solves the three major problems of children at the same time

- ★. "Tooth decay" who loves sugar and does not clean teeth
- ★. I love video games and TV, and I'm prone to "Myopia"
- ★. Learning, study stress, brain growth problems



DHA

Xylitol
Erythritol



Ingredient

Refined fish oil omega 3 (DHA, EPA), Xylitol, Erythritol.

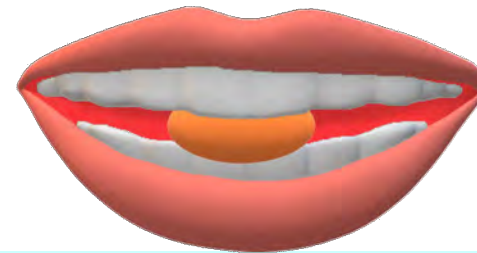
Usage

1-3 capsules / day. After a meal. If you chew and then swallow, the effect will improve.





Unique production technology: suitable for children's taste



Package

430mg (300mg content) gummy capsule / orange flavor, 60 capsules / bottle / box

Feature

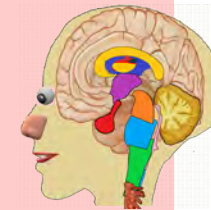
Supplements for children

Three effects in one "protection of brain, eyesight, teeth" One grain solves the three major problems of children at the same time

- ★. "Tooth decay" who loves sugar and does not clean teeth
- ★. I love video games and TV, and I'm prone to "Myopia"
- ★. Learning, study stress, brain growth problems



DHA
Xylitol
Erythritol



Ingredient

Refined fish oil omega 3 (DHA, EPA), Xylitol, Erythritol.

Usage

1-3 capsules / day. After a meal. If you chew and then swallow, the effect will improve.





Eye Care

Eye Care

Summary



- **Japanese functional food certification function name:**
- Lutein and zeaxanthin can increase the pigment of the macula and reduce the damage pressure caused by light damage such as blue light. Due to the improvement of contrast sensitivity, the function of adjusting the eyes is obtained.

Package 30 capsules/bottle, 1 capsule weighs 465mg (inner volume 300mg)/soft capsule.

Feature



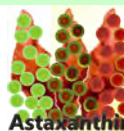
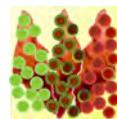
- Lutein prevents macular disease, cataracts, myopia, hyperopia and night blindness.
- Anthocyanins are important substances for the optic nerve that enhance vision, prevent damage to the capillaries of the eye, and improve night vision.
- It boosts immunity, removes active oxygen, and UV rays do not hurt your eyes. DHA nourishes nerve cells.

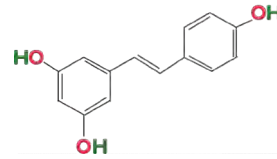
Ingredient

Active lutein, zeaxanthin, blueberry extract, ω 3DHA, blackcurrant extract, haematococcus pigment, astaxanthin, β -carotene, lycopene.

Usage

1 capsule/day, take after meal.





Catechin



Lycopene



Astaxanthin

Japanese functional food certification function name:
Coenzyme Q10: anti-fatigue

CoQ₁₀

Package

30 capsules/bottle, 1 capsule weighs 450mg(inner volume 280mg)/soft capsule

Feature

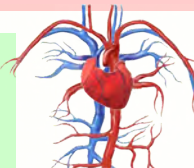


- Q10 boosts the vitality of heart cells and prevents cardiovascular disease.
- Astaxanthin prevents heart disease, diabetes and Alzheimer's disease.
- Haematococcus pigment protects the heart and blood vessels and prevents cardiovascular diseases.
- Red wine extract resveratrol, anti-oxidant, anti-cancer, and activate longevity gene SIR2.
- Coastal pine bark extract resists free radical oxidation and promotes new metabolism.



Ingredient

Coenzyme Q10, Astaxanthin, Haematococcus Pigment, Resveratrol, Vitamin E, Lycopene, Pinus pinaster, SOD, active hydrogen, enzymes, EGCG.



Usage

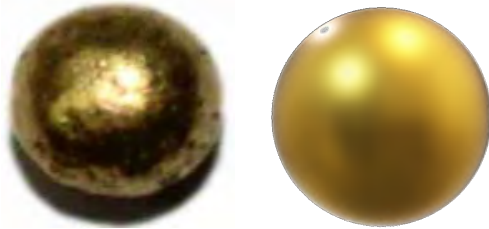
1-2 capsule/day, take after meal.

Resveratrol Coenzyme Q₁₀



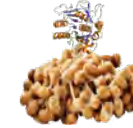
OPC



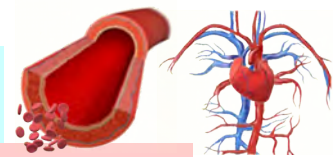


Japanese functional food certification function name:
Coenzyme Q10: anti-fatigue

Coenzyme Q₁₀



CoQ₁₀

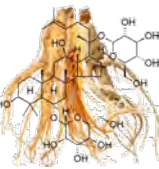


Package 100 pill/bottle/wooden box, 1 capsule weighs 20mg/golden pill.

Feature

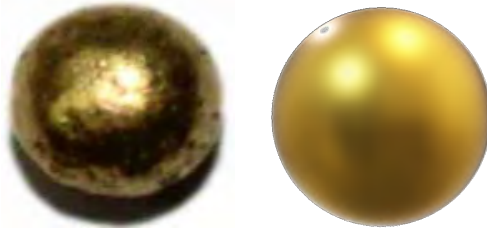
- Antioxidant, lower cholesterol, prevent cardiovascular disease.
- Increase the contraction rate of the left atrium to prevent "heart failure".
- Suppresses "hypertensive heart failure" and "hypertensive heart failure" caused by "muscle infarction heart failure".

Ingredient Taurine, bile acid, ginsenosides, notoginsenosides, nattokinase, coenzyme Q10, L-carnitine, pearl powder, catechins, pomegranate extract, yam, borneol.



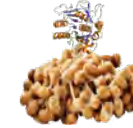
Usage 1-5/Day, take after meal. Better dissolution and absorption under the tongue



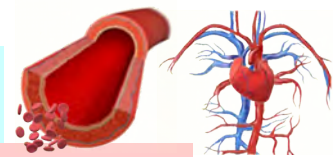


Japanese functional food certification function name:
Coenzyme Q10: anti-fatigue

Coenzyme Q₁₀



CoQ₁₀



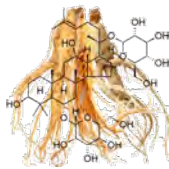
Package 100 pill/bottle/wooden box, 1 capsule weighs 20mg/golden pill.

Feature ➤ Antioxidant, lower cholesterol, prevent cardiovascular disease.

➤ Increase the contraction rate of the left atrium to prevent "heart failure".

➤ Suppresses "hypertensive heart failure" and "hypertensive heart failure" caused by "muscle infarction heart failure".

Ingredient Taurine, bile acid, ginsenosides, notoginsenosides, nattokinase, coenzyme Q10, L-carnitine, pearl powder, catechins, pomegranate extract, yam, borneol.

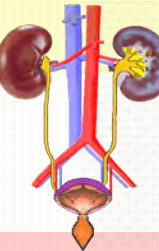


Usage 1-5/Day, take after meal. Better dissolution and absorption under the tongue





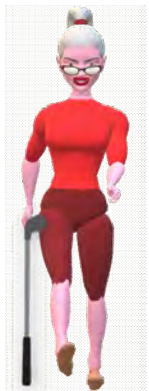
- Women's urethra is short, and bacteria can easily enter the bladder through the urethra, causing inflammation.
- Coughing, sneezing → abdominal pressure incontinence.
- Prone to aging → urge incontinence.



Package

60 capsules/bottle, 1 capsule weighs 490mg (inner volume 300mg)/soft capsule.

Feature



- Lignan can activate female hormones and prevent urine leakage.
- Stigmasterol can enhance the thickness of the urethral mucosa and prevent urinary incontinence.
- Enhance the strength of pelvic muscles, protect mucous membranes, and prevent urine leakage.
- Anthocyanins hinder the reproduction of bacteria in the bladder and prevent inflammation of the urethra.
- Make the endothelium of the urinary tract smooth and make it difficult for bacteria to attach.
- Anti-oxidant, anti-bacterial, improve immunity, and scavenge free radicals.



Ingredient

Pumpkin seed extract, cranberry extract, lycopene.

Usage

1-3 capsule/day, take after meal.

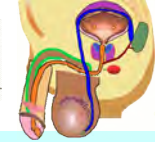
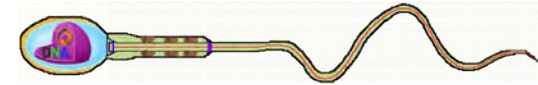




Prostate disease is more likely to occur in older men:
Frequent urination, difficult urination, prolonged urination,
nocturia, urgency, stagnation, and leakage of urine.



Spermatozoon



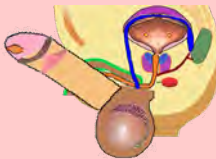
Package

60 capsules/bottle, 1 capsule weighs 490mg (inner volume 300mg)/soft capsule.

Feature



- Inhibit the concentration of testosterone and dihydrotestosterone.
- Inhibit the activity of dihydrotestosterone synthase (5 α reductase).
- Contains β -sitosterol to improve the symptoms of prostate hypertrophy.
- Lower cholesterol (a factor of prostate hypertrophy).
- The prostate is one of the tissues with the highest zinc content.
- Eliminate free radicals, fight prostate inflammation, and prevent hair loss (baldness).



Ingredient

Saw Palmetto Extract, Yeast Zinc, Phytosterol,
Lycopene, Olive Oil Extract.



Serenoa



Phytosterol

Yeast Zinc

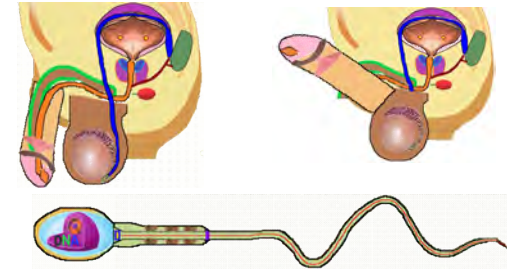
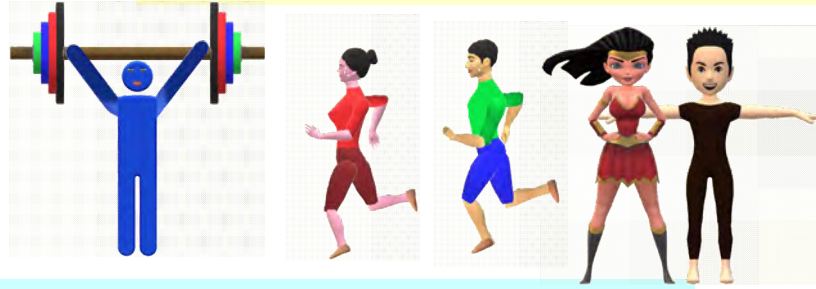
Usage

1-2 capsule/day, take after meal.





The source of the male: Spermatozoon



Package

90 tablets/bottle, 1 tablet weighs 300mg/tablet.

Feature

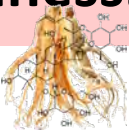


- Enhance male libido, enhance libido → want to do.
- Anti-stress, relieve tension, enjoy the spirit → do it.
- Replenish hormones, supplement hormones → Do it for a long time.
- Increase the number of sperm, replenish sperm → can do.
- Strengthen the hardness and endurance, enhance the hardness → With hardness.



Ingredient

Velvet antler, Trionychidae extract, horse testicle, ginseng, SOD-like, plant complex enzyme, yeast zinc, Tongkat Ali, maca, arginine, citrulline, black corn, active hydrogen.

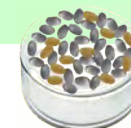


SODLike

Usage


1-4 tablets/day, take after meal.

Composite enzyme




Yeast Zinc






康富世界



Package

Feature



SOD Purine Clear

SOD Purine Clear

Uric acid

Gout

capsules/bottle, 1 capsule weighs 199mg, content 150mg/hard capsule

Japanese functional food certification function name:
"The function of lowering uric acid and preventing gout"

Ingredient

Usage

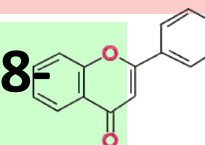
Chrysanthemum extract, flavonoids, luteolin and its aglycon glycosides (luteolin-8-glucoside, isoorientin, cynyoside, rutin), luteolin-4'-O -Glucoside.


Take 1 capsule daily, after meals, adjust the amount according to your symptoms.

English

Link

149-HCW



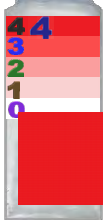




Inspection Kits: Genetic testing,
Hydrogen detection,
Antioxidant capacity testing(ORP),
Lipid peroxide MDA testing



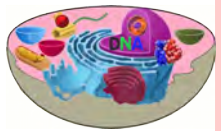
+546



Package

2g × 30 bags/box, fine particle powder/easy-tear aluminum foil.

Feature



- Four antioxidants VS. 4 highly toxic ROS, 「kunShinSaShi」 formula, Enzyme + Coenzyme.
- Plant fermentation enzymes, Nutrients, Vitamins, Trace Minerals, Phytochemicals, Antioxidants.
- Anti-ROS oxidation, cell protection, anti-aging, skin care, longevity gene activation, anti-cancer.
- Immunity UP, antiviral bacteria, antiallergic, anti (blood pressure, blood sugar, blood lipid, uric acid).
- Promotion of metabolism, detox, improvement of constipation, diet, prevention of lifestyle-related diseases.

Ingredient

Natto Fermented SOD, Composite enzyme, Aojiru Dietary fiber, Ionic Active hydrogen, Vitamin C ester, Lemon C, Barley leaves vitamins and minerals.

Usage

1-2 bag a day, after eating.

Composite enzyme

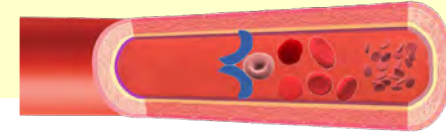
SODLike





Japanese functional food certification function name:
FU (unit of ability to dissolve fibrin)

10000FU/g

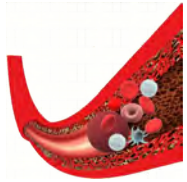


FU

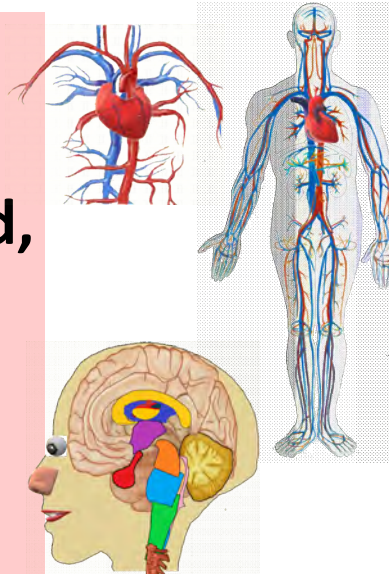
Package

60 capsules/bottle, 1 capsule weighs 455mg (inner volume 300mg)/soft capsule.

Feature



- Nattokinase is a protease produced by natto bacteria (thrombolytic enzyme is to dissolve blood clots, reduce the incidence of thrombotic diseases caused by fibrinogen in the blood, relieve thrombosis, cerebral embolism, stroke, angina, myocardial infarction, arterial Atherosclerosis.
- To prevent high cholesterol, high blood pressure, senile dementia, central retinal vein occlusion, hemorrhoids and other blood clots.



Ingredient Nattokinase, soybean lecithin, SOD, catechin EGCG, active hydrogen, enzymes.

Usage

1-2 capsule/day, take after meal.





Japanese functional food certification function name:
"Maintains the walking power of middle-aged and older people, which acts on the leg muscles."



Package

30 tablets/bottle, 1 tablet weighs 250mg/tablet

Feature

- It nourishes qi, strengthens the body, relieves fatigue, regulates blood pressure, and enhances immune function. ◦
- BCAA (Branched Chain Amino Acid) is often used as a supplement to enhance muscle strength in the sports world.
- Arginine can effectively improve male erectile dysfunction (ED) and improve male sexual performance.
- Flavonoids are anti-oxidant, anti-aging, arteriosclerosis, myocardial infarction, cancer prevention.
- PMFs improve obesity, burn fat, lower neutral fat, and improve walking ability.



Ingredient

Flavonoids, polymethoxy flavonoids, characteristic component PMFs derivatives, BCAA, arginine and other 16 amino acids, small flower kaempferi, black ginger extract BGE, phytochemicals, minerals.

Usage

1 tablet/day, take after meal. Both men and women can take it.





Package

SOD Bloodsugar Clear



Japanese functional food certification function name:
Increase the effect of intestinal probiotics, activate the
intestines, lower neutral fat, lower blood sugar after meals.

90 tablets/bottle, 1 tablet weighs 300mg/tablet



Dietary fiber

Feature

- SOD enzymes and enzymes enhance intestinal probiotics, resist free radical oxidation.
- Inulin regulates blood sugar levels to prevent the exacerbation of diabetes.
- Inulin inhibits the absorption of starch and fat, lowers blood sugar levels and prevents diabetes.
- Indigestible dextrin delays glucose absorption and prevents a rapid rise in postprandial blood glucose.
- Reduces the effects of α -glucosidase, improves constipation and lowers cholesterol.

Ingredient

Fermented SOD, plant complex enzyme, indigestible dextrin, inulin, dietary fiber, Jerusalem artichoke, salasia, active hydrogen.



Usage

1-3 tablets/day, take 30 minutes before meals.

Composite enzyme

SOD like





Package

SOD Bloodsugar Clear



Japanese functional food certification function name:
Increase the effect of intestinal probiotics, activate the
intestines, lower neutral fat, lower blood sugar after meals.

90 tablets/bottle, 1 tablet weighs 300mg/tablet



Dietary fiber

Feature

- SOD enzymes and enzymes enhance intestinal probiotics, resist free radical oxidation.
- Inulin regulates blood sugar levels to prevent the exacerbation of diabetes.
- Inulin inhibits the absorption of starch and fat, lowers blood sugar levels and prevents diabetes.
- Indigestible dextrin delays glucose absorption and prevents a rapid rise in postprandial blood glucose.
- Reduces the effects of α -glucosidase, improves constipation and lowers cholesterol.

Ingredient

Fermented SOD, plant complex enzyme, indigestible dextrin, inulin, dietary fiber, Jerusalem artichoke, salasia, active hydrogen.



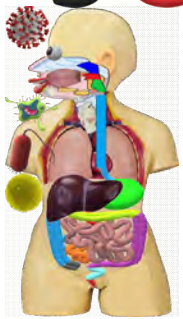
Usage

1-3 tablets/day, take 30 minutes before meals.

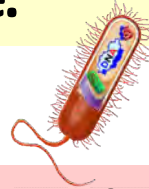
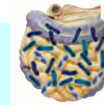
Composite enzyme

SOD like





Functional functions of lactic acid bacteria::
Improve intestinal environment, intestinal regulation, and improve laxative.



Package Feature

60 tablets/bottle, 1 tablet weighs 500mg/Buccal Tablet

- Probiotics (LAB-FP. *Lactobacillus crispatus*) + prebiotics (branched oligosaccharides) VS. malignant bacteria.
- Fight against gingival pathogens (*Porphyromonas gingivalis*, *Fusobacterium nucleatum*), tooth decay bacteria (*Streptococcus mutans*).
- Anti-gastric cancer pathogenic bacteria (*Pylori*), *Escherichia coli*, *Clostridium weichii*, protect the digestive tract.
- Help increase the intestinal flora, enhance immunity, anti-virus, anti-bacterial, anti-allergic, anti-cancer.
- Xylitol, erythritol, and branched oligosaccharides can prevent the oral cavity from becoming acidic and prevent dental caries.

Ingredient

Natto fermentation SOD, probiotics (*Lactobacillus crispatus*, lactic acid bacteria fermented peptides), catechin EGCG, young barley leaves (green juice), plant complex enzymes, active hydrogen, xylitol, erythritol, low branching Glycans.



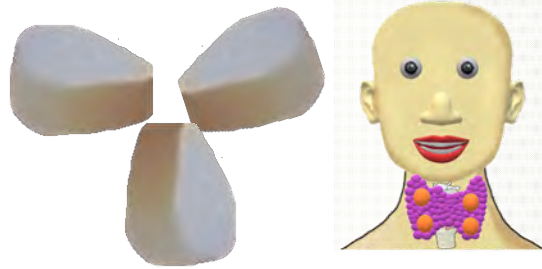
Usage

1~3 tablets a day, after eating



Composite enzyme SOD Like EGCG





The indication of the Ge-132 preparation in Japan is "improvement of viral markers in HBe antigen-positive chronic hepatitis B".

Ge-132



Propagermanium



Iodine

Package 90 tablets/bottle, 1 tablet weighs 250mg/tablet.

Feature



- Ge-132 has the protective effect of virus infection and immune stimulation.
- Ge-132 acts on FBXW7 protein (tumor suppressor) to inhibit cancer metastasis.
- Fucoidan can be anti-oxidant, anti-inflammatory, anti-cancer, anti-virus, and inhibit blood sugar rise.
- P. linteus glycosides are anti-oxidant, anti-inflammatory, enhance immunity, anti-cancer, protect liver, anti-dementia, cardiovascular disease prevention, anti-allergic, soothing sleep, analgesic, inhibit uric acid and skin care.
- SOD, EGCG, Barley leaves, enzymes protect cells against oxidation, and iodine protects thyroid function.

Ingredient

Organic germanium 132, Fucoidan, Natto bacteria fermentation SOD, P. linteus, Iodine, Catechin EGCG, Barley leaves, Plant complex enzymes, Active hydrogen.



Usage 1-3 tablet/day, take after meal.

Composite enzyme

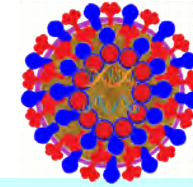
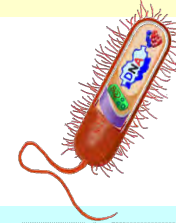
SODLike

EGCG



Immune Star

Natural plants from Japan, North and South America, fermented to extract functional ingredients.



Package

60 capsules/aluminum foil bag, 1 capsule weighs 380mg (inner volume 300mg)/hard capsule.

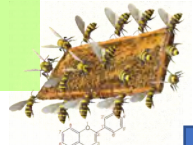
Feature

- Probiotics + Prebiotics, produce Biogenics, fight pathogens (bacteria, viruses).
- Green tea, matcha extract (EGCG catechin) are antibacterial and antiviral.
- Peptides and proteins extracted from lactic acid bacteria fermentation are antibacterial and antiviral.

Ingredient

EGCG

Probiotics (Lactic Acid Bacteria, Lactic Acid Bacteria Extract, Lactic Acid Bacteria Fermented Peptides, Lactobacillus crispatus), Echinacea Extract (Chicolic Acid), Propolis (Flavonoids), Allicin, Olive Leaf Extract (Oleuropein), Green Tea (catechin), Matcha (EGCG), SOD-like, Active hydrogen, Plant complex enzymes, Barley leaves (vitamin C, dietary fiber).



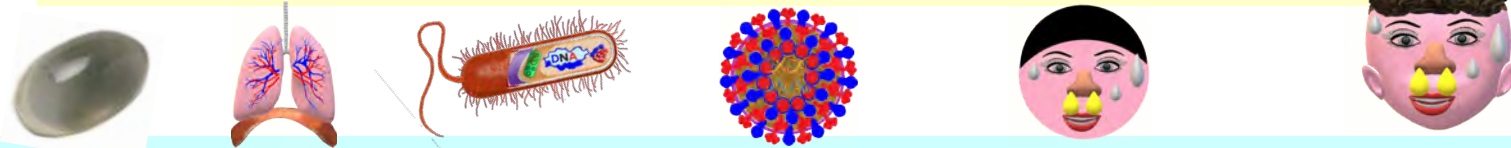
Usage 1-2 capsules/day, take after meal.

Propolis

Flavonoid

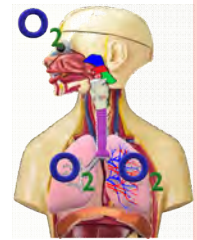


The first choice of Immune set: in epidemic prevention, improve the sequelae of infection (such as hypoxia, brain fog, shortness of breath, etc.).



Package 60 capsules/aluminum foil bag, 1 capsule weighs 390mg (inner volume 250mg)/Soft capsule.

- Feature**
- Bring oxygen to the cells of the whole body → prevent hypoxia of the brain, lungs, heart and blood vessels.
 - Can be used as an adjuvant for vaccines (such as influenza vaccine) → enhance the function of immune cells.
 - Improve hypoxia → prevent cancer cells from angiogenesis and metastasis and proliferation.
 - As a precursor of steroids → prevent chronic and acute systemic inflammation.
 - For the precursor of sex hormones → enhance female and male hormone function.

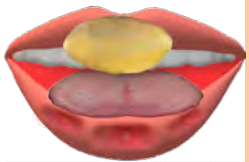


Ingredient

Usage

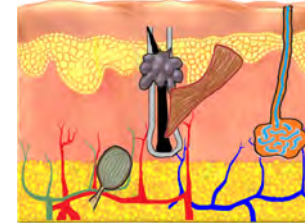
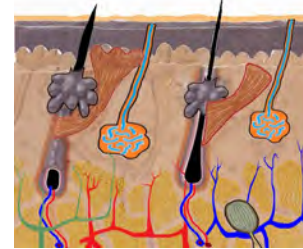
Each capsule contains 250mg of 100% squaleneterpene extract.

- 1-2 capsules daily. Take after meals. When protecting the oral mucosa, bite the capsule and apply it directly. When protecting the esophagus and gastric mucosa, bite the capsule first and then swallow it.



Skin care

Whitening, moisturizing, wrinkle removal, anti-spot, skin repair.



Ageing

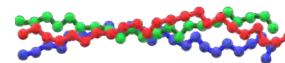
Package 60 tablets (10 tablets × 6 rows)/aluminum foil bag, 1tablet weighs 300mg/tablet.

- Feature**
- Prevent skin damage: prevent UV light damage, free radical oxidative damage, and anti-aging.
 - Skin nutrition: amino acid, elastin, moisturizing factor (hyaluronic acid, ceramide).
 - Promote skin regeneration: cantaloupe embryonic stem cells, peptides, enzymes, vitamins, minerals.

Ingredient Small molecule hyaluronic acid, small molecule collagen, L-vitamin C, ceramide (molecular D), elastin, cantaloupe blastocyst, Euglena, NMN, SOD, catechin EGCG, lactic acid bacteria fermented peptide, plant compound enzyme, a variety of amino acids, a variety of minerals, vitamins, dietary fiber.

Usage 1-3 capsules daily. Take after meals.

Hyaluronic acid
Collagen



Arbutin

Elastin



Vitamin C

SOD NMN Enzyme EGCG





HCW
Health
Circle
World

Package
Feature



Ingredient

Usage

Anti Aging Pack


Skin care

Anti-spot
Moisturizing
Whitening

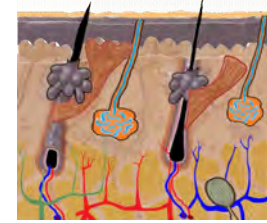
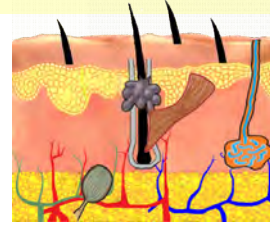


Anti Aging Pack

Summary

English
058-05-HCW  **Link**

Cleansing, exfoliating, whitening, moisturizing, anti-wrinkle, anti-spot, photo-damaged skin repair.



Ageing



Vitamin C

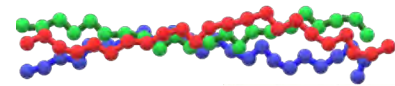


SOD

50g/bottle, 250g/bottle.

- Six Secrets, 6 Minute Whitening - Mechanism:
- Six whitening factors + six anti-black factors → 6 minutes whitening.
- Six skin whitening factors: 1. Ion adsorption factor (deep cleansing). 2. Transparency factor. 3. Moisturizing factor. 4. Whitening factor. 5. Cell regeneration factor (plant placenta). 6. ODT (sealing wrapping method).

SOD, plant stem cells, candied dates, rose petals, lavender, equisetum, pine nuts, hops, hyaluronic acid, rosemary, aloe vera, fibroin, collagen, amino acids, pueraria, chlorella, vitamin B12, L-C.

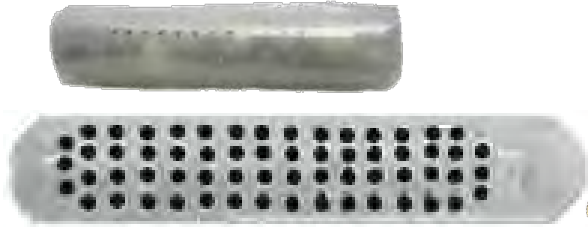


Hydrolyzed **silk** **L Vitamin C**





Hydrogen **anion** **Anti-oxidation**



Good water: negative hydrogen ion water, small molecular group, weak alkaline, sterile and safe, remove chlorine (disinfectant), remove free radicals, contain trace elements, minerals.

Active **hydrogen**



Package

Builder 22g/Box with 7 functional elements.

Feature

Ingredient



1. Negative hydrogen ion ball: generate active hydrogen water.
2. Negative ion ball: generate weak alkaline water.
3. Far-infrared sphere: water activated into small molecular clusters.
4. Mineral Balls: Calcium, Magnesium, Zinc, Iron, Selenium.
5. Organic germanium balls: enhance immunity and promote metabolism.
6. Sterilization ball: kill virus and bacteria → safe water.
7. Dechlorination ball: Eliminate residual chlorine (disinfectant) in water.



Ge-132 **Hydrogen water** **Zn Fe Se**

Usage

Put 1 water stick in 500cc of drinking water, generate negative hydrogen water in 30 minutes, take out the water stick.

Mn Mo Cl₂ Ca Mg





Free Radical Test

Summary

Free radical Test

Japan and the world patent "licensed meat capacity":
Detection of aldehyde groups such as malondialdehyde (MDA)



Package 1 set, 2 sets, 1800 sets, 1 set (1 reagent + 1 straw)

Detection target: detection of the concentration of the oxidized metabolite MDA (malondialdehyde) (qualitative).

Detection purpose: Detection of free radicals, formaldehyde, acetaldehyde, malondialdehyde, aldehydes, and carcinogens.

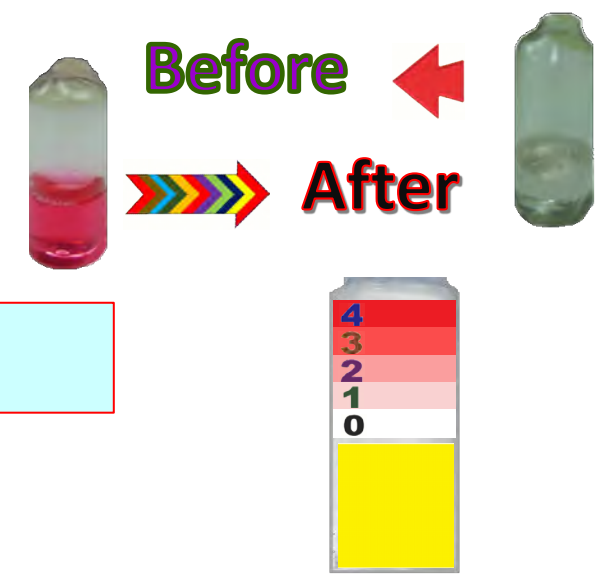
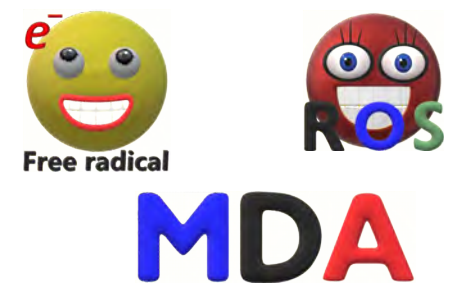
Detection method: With 1cc urine, the result can be found by the reaction between urine and the reagent.

Test result: If the sample urine reacts to red, it is "positive".

➤ The darker the color, the higher the oxidation OD value.

Reagent operation: Confirmation of antioxidant activity.

Antioxidants (SOD, Vitamin C, Active Hydrogen, etc.) Comparison before and after drinking





Package
Feature

CYP2E1

1 piece, 1000 piece, 8000 piece

Metabolism Gene Test Patch Summary

Liver **Metabolism Gene Test**

Test patch on the skin of gene proteins related to liver detox function and metabolic function:

Gene mutation test in 20 minutes



- Metabolic diseases, (alcohol, coffee, drugs) metabolism and the relationship between genes?
- Why do some people "blush" when they drink, and some people "face pale"?
- Blushing after drinking, the risk of "esophageal cancer" is 50 times that of the average person?
- Why the same "drinking coffee", some people will hurt the liver and increase the risk of heart disease?
- "Cytochrome P-450, Alcohol Dehydrogenase, Aldehyde Dehydrogenase" for liver metabolism?

Detection principle: The medicament of the reagent patch will react with the skin protein. The higher the gene mutation, the redder the reaction.

Usage

Put the "reagent sticker" on your wrist and compare the color with the color chart after about 20 minutes.

